

Side table

CELESTE

BY Christophe de Sousa

REF. 55A *osier*

REF. 55B *cork*



Materials

Estremoz marble from Portugal, oak veneer and wicker basket made of stems of osier. There is also the tabletop option in 100% natural agglomerated dark cork.

Finishings

Marble in polished finishing. Oak veneer with colourless matt varnish. Agglomerated cork and wicker basket with colourless aqueous coating.

Custom

Arranged with the client.

Description

On the slopes of the vineyard, terrace by terrace, Celeste hurries to remove bunches of ripe grapes from the vines. This is Celeste's day-to-day life, a woman who grew up among olive trees and Douro vines. A way of life she embraced and in which she gets her support and the pleasure of taking care of the land. Inspired by this character, we developed the Celeste side table. It is composed of a wicker basket that rests on a marble cylinder finished off with a half-sphere. The table represents a strong character that carries the basket on her back with the effort of her work. Thus, in an apparent balance challenge, the two simple geometric shapes are joined into a distinctive design that pays tribute to the farmworkers.

DAM

Office
+351 256 004 124
contact@dam.pt

Press
+351 920 401 918
press@dam.pt

www.dam.pt
copyright © DAM Brand
Portugal, 2020

Smile with us :)

Side table

CELESTE

BY *Christophe de Sousa*

REF. 55A *osier*

REF. 55B *cork*



Side table

CELESTE

BY *Christophe de Sousa*

REF. 55A *osier*

REF. 55B *cork*



Side table

CELESTE

BY Christophe de Sousa

REF. 55A *osier*

REF. 55B *cork*



Side table

CELESTE

BY Christophe de Sousa

REF. 55A *osier*

REF. 55B *cork*



DIMENSIONS

CELESTE osier

REF. 55

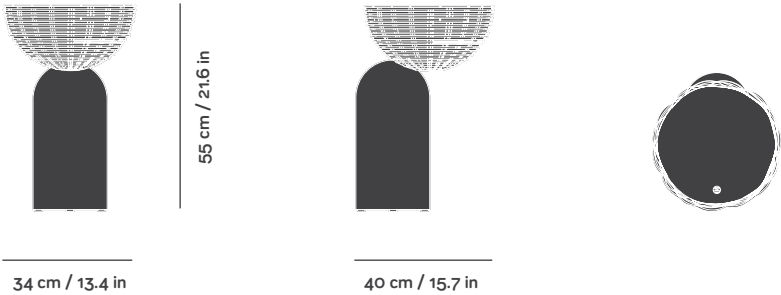
Packaging

W42 x D36 x H57 cm

W16.5 x D14.2 x H22.5 in

Gross Weight 49 kg / 108 lbs

Units per pack 1pc



CELESTE cork

REF. 55

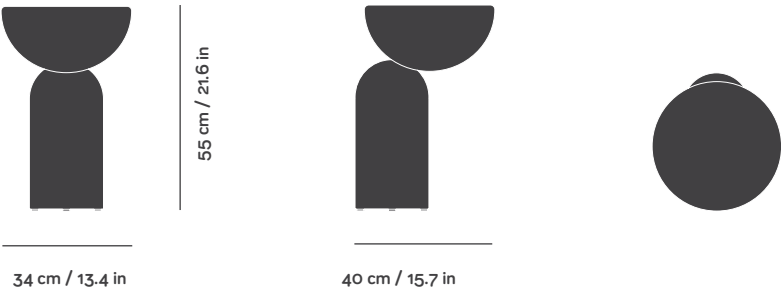
Packaging

W42 x D36 x H57 cm

W16.5 x D14.2 x H22.5 in

Gross Weight 49 kg / 108 lbs

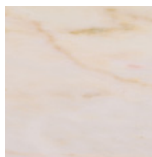
Units per pack 1pc



MATERIALS

ESTREMOZ MARBLE

Medium grained calcite marble with granoblastic texture, beige with rosy, brownish and, sometimes, greyish small veins. Origin: Évora, Portugal. Compression breaking load: 93 Mpa. Bending strength: 19,3 Mpa. Volumetric weight: 2710 kg/m³. Water absorption at N.P. conditions: 0,1%. Apparent porosity: 0,2%. Abrasion test: 2,2 / 20 mm. Impact test: minimum fall H45 cm.



Estremoz Marble
Polished

STEMS OF OSIER

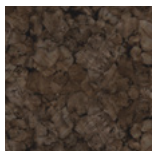
The wicker basket is made of long thin stems of osier. It is a raw material of vegetable origin obtained from species of the genus *Salix*, of the *Salicaceae* family. It is a strong, light and environmentally-friendly material which is weaving by hand. It is finishing with a colorless aqueous coating. Origin: Portugal.



Stems of Osier
Natural

AGGLOMERATED CORK

High performance in thermal and acoustic insulation. Resistant to abrasion and impact. Fire retardant. It is finished with colourless aqueous coating with properties of water repellency, stains and high resistance to UV.



Dark Cork
Colourless

NOTES

Other finishing options are possible, on a case-by-case basis.
Samples of finishings are only representative and not an exact match of colour and tonality.